

## Making Connections



ACTIVITY  
INTERMEDIATE & ADVANCED

BEFORE READING/AFTER READING

PRE-K

K

1-3

### Objective

Students will improve reading comprehension by activating prior knowledge.

### Background

How we learn is deeply affected by our past experiences and prior knowledge. This background knowledge (schema) supplies us with a context in which to put new information and thus makes that information relevant and accessible (Zimmerman, 1997). Making connections with text is a skill that should be modeled, taught and reinforced explicitly. It is best to teach and model each strategy separately, one at a time. Once students are thoroughly comfortable and familiar with each connection, you can ask for all three and switch among them.

### Materials

Instructional-level text

Whole group: chart paper/ board and markers/chalk

Small group: index cards for questions, paper for recording responses

Independent practice: worksheet/response journal

### Procedure

Below are three main text connections and some sample questions. Making connections to text can be done through whole or group discussion, writing, partner sharing, independent follow-up, etc. The goal is to have this process become part of the reader's natural reading process so the more often you remind them to make connections, the better. Be sure to model the process numerous times before making it an independent activity or handing it off for students to do in pairs. Start with one connection at a time.

Continued...

# Making Connections (Continued)

**ACTIVITY**  
INTERMEDIATE & ADVANCED

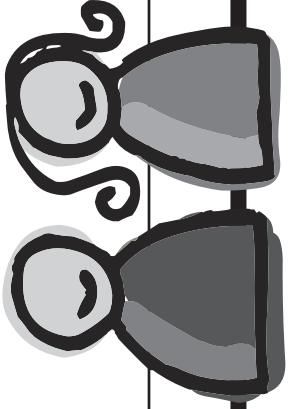
BEFORE READING/AFTER READING

PRE-K     K     1-3

**Before Reading:** Text connections should be made both before and after reading. Before reading, students are making connections and predictions about what they know.

1. **Text-to-self:** Text-to-self connections are the highly personal, and often most motivating associations we make when we relate a text to something from our own life.
  - What do I have in common with this text?
  - How does it differ from me?
  - Does this remind me of anyone/anything/anywhere I know?
  - What feelings did I experience when reading? Were they familiar?
  
2. **Text-to-text:** Text-to-text connections are associations made from one text to another. There can be a variety of similarities including topic, time period, author, illustrator, etc.
  - Have I read something like this before?
  - What does it have in common with other texts I know?
  - How does it differ from other texts?
  - Does this text remind me of anyone/anything/anywhere I have read about before?
  
3. **Text-to-world:** Text-to-world connections are the more general, overriding subject knowledge that every reader has. General knowledge goes beyond actual experiences to include any media influences like T.V., movies, newspapers, etc.
  - What does this text have in common with the real world?
  - How does it differ from the world around me now?
  - Does the text remind me of anyone/anything/anyplace I have seen in the media?
  - Does it relate at all to the world around me?

**After Reading:** Share outcomes and responses and discuss how making connections helped student motivation, comprehension, and memory. Allow students to make more connections after they have read.



# Text-to-Self Connections

ACTIVITY  
GRAPHIC ORGANIZERS

BEFORE READING/AFTER READING

PRE-K  K  1-3

Name \_\_\_\_\_

Book/Text \_\_\_\_\_

Author \_\_\_\_\_

Topics/concept from the text

\_\_\_\_\_

\_\_\_\_\_

\_\_\_\_\_

\_\_\_\_\_

\_\_\_\_\_

\_\_\_\_\_

\_\_\_\_\_

\_\_\_\_\_

\_\_\_\_\_

\_\_\_\_\_

In my life

What does this remind me of in my life? What is this similar to in my life?

\_\_\_\_\_

\_\_\_\_\_

\_\_\_\_\_

\_\_\_\_\_

\_\_\_\_\_

\_\_\_\_\_

How is this different from my life?

\_\_\_\_\_

\_\_\_\_\_

\_\_\_\_\_

\_\_\_\_\_

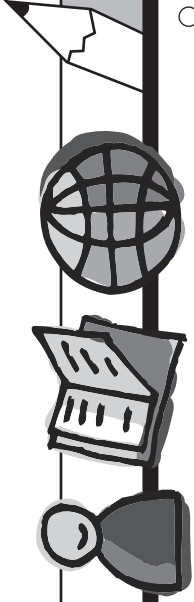
\_\_\_\_\_





# Self, Text, World Connections

BEFORE READING/AFTER READING



ACTIVITY  
GRAPHIC ORGANIZERS

PRE-K  K  1-3

Name \_\_\_\_\_

Date \_\_\_\_\_

**Make one of each type of connection to the text.**

Connection Type	Topics/Concept from Text	My Connection
	<hr/> <hr/> <hr/> <hr/> <hr/> <hr/> <hr/> <hr/> <hr/> <hr/>	<hr/> <hr/> <hr/> <hr/> <hr/> <hr/> <hr/> <hr/> <hr/> <hr/>
	<hr/> <hr/> <hr/> <hr/> <hr/> <hr/> <hr/> <hr/> <hr/> <hr/>	<hr/> <hr/> <hr/> <hr/> <hr/> <hr/> <hr/> <hr/> <hr/> <hr/>
	<hr/> <hr/> <hr/> <hr/> <hr/> <hr/> <hr/> <hr/> <hr/> <hr/>	<hr/> <hr/> <hr/> <hr/> <hr/> <hr/> <hr/> <hr/> <hr/> <hr/>



# Making Connections Chart

## ACTIVITY GRAPHIC ORGANIZERS

BEFORE READING/AFTER READING

 PRE-K  K  1-3

Name \_\_\_\_\_

Date \_\_\_\_\_

**Make connections to the text and then classify what type of connection you made.**

What the text is about

What it reminds me of

Type of Connection

_____ _____ _____	_____ _____ _____	_____ _____ _____
_____ _____ _____	_____ _____ _____	_____ _____ _____
_____ _____ _____	_____ _____ _____	_____ _____ _____
_____ _____ _____	_____ _____ _____	_____ _____ _____